

# WETLANDS INVERTEBRATE SPOTTER



Ireland has an incredible amount of invertebrates. An invertebrate is an animal with no back bone which are our insects. Tralee bay is a haven for these small creatures as we do not use insecticides on the ground. Our growing number of trees offer a food source and new pollinator friendly gardens offer loads of food for them as well. Search your garden for some of these species. Look in the trees, in your veg plot and in the grass.



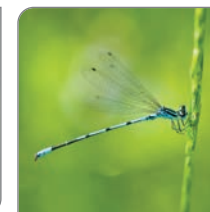
**Green Shieldbug**  
*Palomena prasina*



**Tortoise Shieldbug**  
*Eurygaster testudinaria*



**Emperor Dragonfly**  
*Anax imperator*



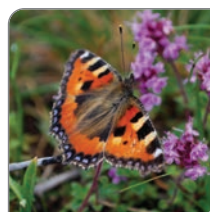
**Common Blue Damselfly**  
*Enallagma cyathigerum*



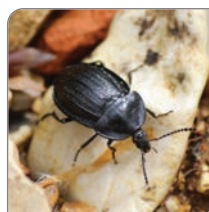
**White Ermine Moth**  
*Spilosoma lubricipeda*



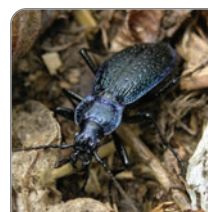
**Red Admiral**  
*Vanessa atalanta*



**Small Tortoiseshell**  
*Aglais urticae*



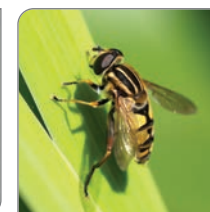
**Black Snail Beetle**  
*Silpha atrata*



**Violet Ground Beetle**  
*Carabus problematicus*



**German Wasp**  
*Vespa germanica*



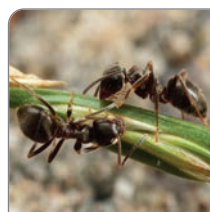
**Footballer Hoverfly**  
*Helophilus hybridus*



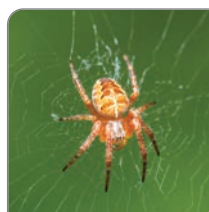
**Red Tailed-Bumblebee**  
*Bombus lapidarius*



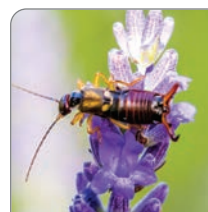
**Buff-Tailed Bumblebee**  
*Bombus terrestris*



**Black Garden Ant**  
*Lasius niger*



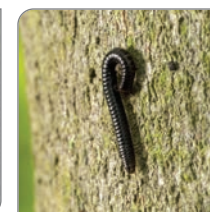
**Cross Spider**  
*Araneus diadematus*



**Common Earwig**  
*Forficula auricularia*



**Garden/Stone Centipede**  
*Lithobius forficatus*



**White-Legged Snake Millipede**  
*Tachypodoiulus niger*



**Woodlice**  
*Oniscus asellus*



**Pill Bug**  
*Armadillidium vulgare*

